

Vertical Efficiency in Descent Compared to Best Local Practices

Pierrick Pasutto, Eric Hoffman and Karim Zeghal
EUROCONTROL Experimental Centre
Brétigny-sur-Orge, France

Abstract—This paper presents an assessment of the vertical efficiency in descent at four major European airports using best local practice for each flow as a reference. The motivation is to assess the potential for short term improvements through an increased adherence to these best practices. The assessment relies on the analysis of the vertical deviation to best descent profiles of each airport, in relation to the additional flight time as a proxy for the level of congestion. It focusses on the 50NM area around each airport and relies on six months of data from 2018 during day-time operations over more than 200 000 flights in total. The assessment reveals a triple relative inefficiency. Firstly, descent profiles significantly lower than best practices: the median vertical deviation for 10 minutes flight time exceeds 2300ft. Secondly, a degradation of descent profiles with the level of congestion: the median vertical deviation for 10 minutes flight time increases by 800ft per 1 minute additional time. Thirdly, a variability of descent profiles for a same level of congestion: the vertical deviation span (90% containment) for 10 minutes flight time is 2000ft or more for a same additional time. The four airports have different deviations on their common range of additional time (between 1600ft and 2100ft in 0-5min range), even more pronounced when considering deviations above and below FL70 with a ratio above/below ranging from 1.2 to 5.8. Further work will involve the identification of the causes of large vertical deviations and possible ways to reinforce adherence to best descent profiles.

Keywords: *vertical efficiency, continuous descent, arrival sequencing*

I. INTRODUCTION

This paper presents an assessment of the vertical efficiency in descent at four major European airports using best local practice for each flow as a reference. The motivation is to assess the potential for short term improvements through an increased adherence to these best practices, with expected benefits in terms of fuel consumption or noise reduction.

The assessment relies on the analysis of the vertical deviation to best descent profiles of each airport, runway and flow, in relation to the additional flight time in the terminal area as a proxy for the level of congestion. It consists of analyzing the effect of the additional time on vertical deviations, and the variability of vertical deviations for a same additional time. It focusses on the 50NM area around each

airport, and relies on six months of data from 2018 during day-time operations over more than 200 000 flights in total.

The paper is organized as follows: after a review of the state of the art, it will describe the data preparation and filtering. It will then present the results on the two indicators of additional time and vertical deviation separately, and on vertical deviation in relation to the additional time. It will finally discuss how the method may also support an absolute assessment.

II. STATE OF THE ART

The Performance Review Unit (PRU) of EUROCONTROL has developed a comprehensive framework to characterize the performances of the arrival management process, encompassing horizontal and vertical dimensions [1][2]. The horizontal dimension relies on the notions of unimpeded time and additional time in the arrival sequencing and metering area, an area of 40NM (extended to 100NM in some analyses) from the airport. The unimpeded time is the transit time in the area in non-congested conditions. The additional time is the difference between the actual transit time and the unimpeded time. It represents the extra time generated by the arrival management and “is a proxy for the level of inefficiency (holding, sequencing) of the inbound traffic flow during times when the airport is congested.” The vertical dimension relies on the analysis of level and continuous descent/climb segments, with indicators such as distance and time flown level, median continuous descent/climb altitude, and percentage of flights performing continuous descent/climb [3]. Regarding continuous descent, a distinction is made for the start altitude: from cruise for fuel considerations, and from 7000ft or above for noise considerations. This methodology is used to assess and compare the performances of the arrival management at the main airports in Europe [4] and between Europe and USA [5]. A related FAA/EUROCONTROL study also investigated the potential benefits of reducing speed in cruise to absorb delays in terminal areas during congested periods [6].

On the US side, [7] examined the changes in terms of vertical efficiency before and after the implementation of new initiatives (optimized profile descent and metering to terminal area). The 30 main US airports were analyzed, for the years 2010 and 2015, with ~2000 flights per airport and per year. The analysis relies on a modeling to estimate the potential savings

in time and fuel, considering three levels of congestion (based on airport acceptance rate). The results indicate a benefit for the airports with both initiatives implemented (in the order of 30% or more for fuel and time), higher than those with only one initiative (and higher than those with no initiative). For those with one initiative implemented, a significant effect of the congestion level was observed with generally lower benefits for higher level. A check was also performed using two standard metrics (distance in level flight and number of level-offs) showing globally consistent trends (optimized descent and metering over optimized descent; however metering only showing no/little benefits).

Other studies investigated potential applicability and options to increase the use of continuous descents during congested conditions, and assessed related benefits. In [8], the objective is to enable continuous descents during congested periods, avoiding conflict with other flows. Partial continuous descents are proposed (between FL250 and FL150) that remove conflicts with crossing traffic in enroute, and with departure traffic in the terminal area. It is shown that, for the airport considered, these constrained continuous descents provide benefits reduced by only 15% compared to unconstrained ones. In [9], two scenarios are considered (distance vs time constrained) reflecting uncongested and congested conditions. Track data from 25 major US airports are considered with a total of 480,000 flights. Modelling enabled the assessment of benefits in terms of distance, level and fuel. Results showed a potential benefit in an uncongested scenario (less than 100kg for 87% of the flights) but much less in a congested scenario (70-85%). These results may appear significantly different from those of the MITRE study. Reference [10] investigated the principles of continuous descents using a scheduling algorithm to remove conflicts strategically in a 4D concept and with different planning horizons. In [11], an analysis was conducted on New York and Paris areas.

The motivation for our work is to complement the absolute assessment of vertical efficiency developed by the studies presented above, by proposing a relative assessment based on best performers of each airport. While the generalization of continuous descents in all traffic conditions remains the ultimate goal, measuring deviations to best performers may reveal a potential for short term improvements through an increased adherence to best local practices without assuming modifications of route design or operating method. Note: measuring deviations to best performers may be seen similar to the method developed by the PRU to assess vertical enroute efficiency per city pairs [2] and is also inherent to the notion of unimpeded and additional times.

The indicators relying on level-offs presented above (altitude and distance) could have been considered for this relative assessment. However, to avoid any issue with the detection of level segments (in particular with the update rate up to 1 minute on the track data), we decided to consider the altitude deviation as the key element. By considering the deviation along flight time, this will also allow combining the two dimensions of altitude and duration into a single indicator.

III. DATA FILTERING

The European airports considered are the four busiest in 2018: Amsterdam-Schiphol (EHAM), Frankfurt-Main (EDDF), London-Heathrow (EGLL) and Paris-Charles-de-Gaulle (LFPG). They are representative of different types of sequencing and metering (vectoring, tromboning, holding, ..) and runway use (single or multiple arrival runways).

The analysis focusses on the sequencing and metering area as defined by the PRU and enlarged to 50NM to fully encompass the sequencing of the four airports. Fig. 1 below shows the trajectories (2500 selected randomly) in the 50NM area with all runway configurations superimposed. In the following, only the parts of the trajectories within this area are considered.

The dataset consists of position reports with an average update rate of 30 seconds (1 minute for LFPG). It contains initially more than 520 000 arrival flights from April to September 2018.

Three filters have been applied to ensure representativeness of data: (1) daytime operations (7h-21h local time) to exclude night procedures; (2) most representative runways (at least 15% of arrivals to the airport), flows (at least 15% of arrivals to the runway) and flight levels at 50NM (at least 15% of flight levels); (3) 'normal' flights entering and exiting the area, excluding go-arounds, flights with exceptionally short or long flying time, or not flying over the final approach fix.

The final dataset contains more than 213 000 arrival flights (EDDF 52 355, EGLL 61 039, EHAM 59 242, LFPG 40 872). Fig. 2 shows the flows and altitudes at entry after filtering.

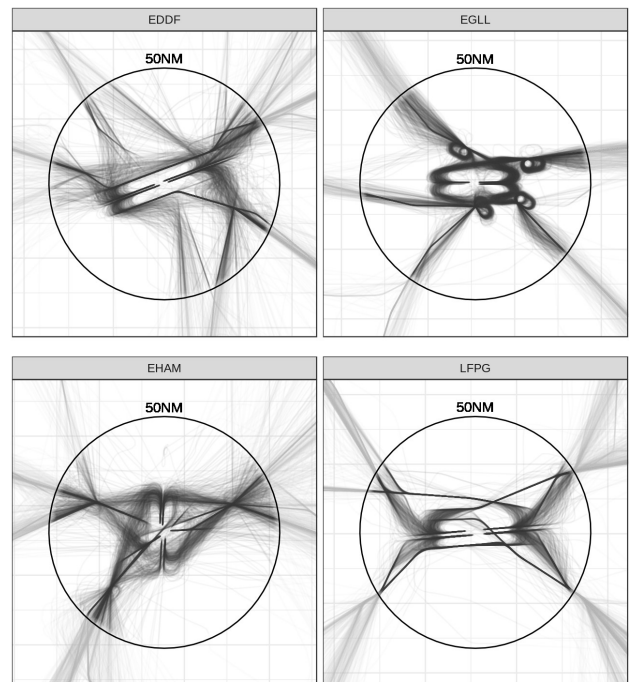


Figure 1. Trajectories in 50NM area

Note: For LFPG, the reduced number of flights and the filtering out of the South arrival runway in Westerly configuration (26L) is due to the use of the departure runway (26R) during three months (change of ILS on 26L) leading to traffic below threshold (15%) for both runways.

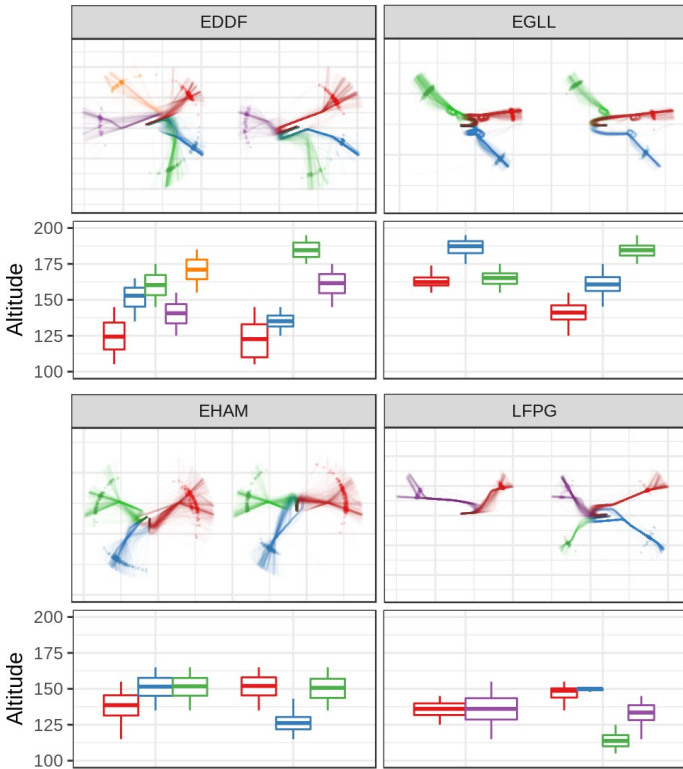


Figure 2. Flows and altitudes at entry after filtering

IV. ADDITIONAL TIME

The additional time in the terminal area is a proxy for the level of congestion and is used to assess (1) the effect of increasing levels of congestion on descent profiles, and (2) the variability of descent profiles for similar levels of congestion. The additional time is the difference between the transit time and the unimpeded time in the sequencing area [1][2].

The median and distributions of transit time and additional time for the dataset considered is shown in the next table and figures. The distribution of additional time is rather similar for three airports (EDDF, EHAM and LFPG) but differs significantly for the other one (EGLL) with a median value more than four times higher (it should be recalled that EGLL mostly operates with one arrival runway).

TABLE 1. MEDIAN TRANSIT AND ADDITIONAL TIMES (MINUTE)

Airport	Transit time	Additional time
EDDF	15.0	1.4
EGLL	19.6	5.7
EHAM	13.8	1.2
LFPG	15.1	0.9

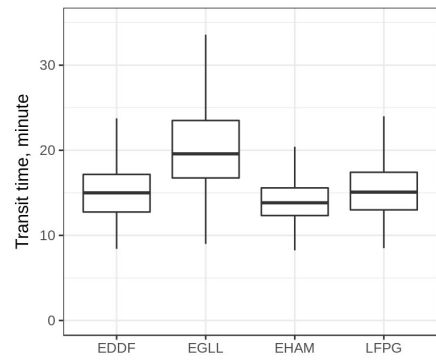


Figure 3. Distribution of transit time

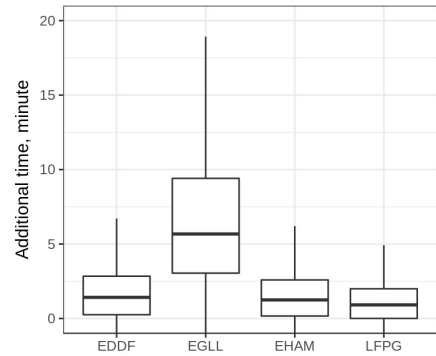


Figure 4. Distribution of additional time

The next figures show trajectories (2500 selected randomly) with additional time, highlighting how and where path extension is achieved (all runway configurations superimposed).

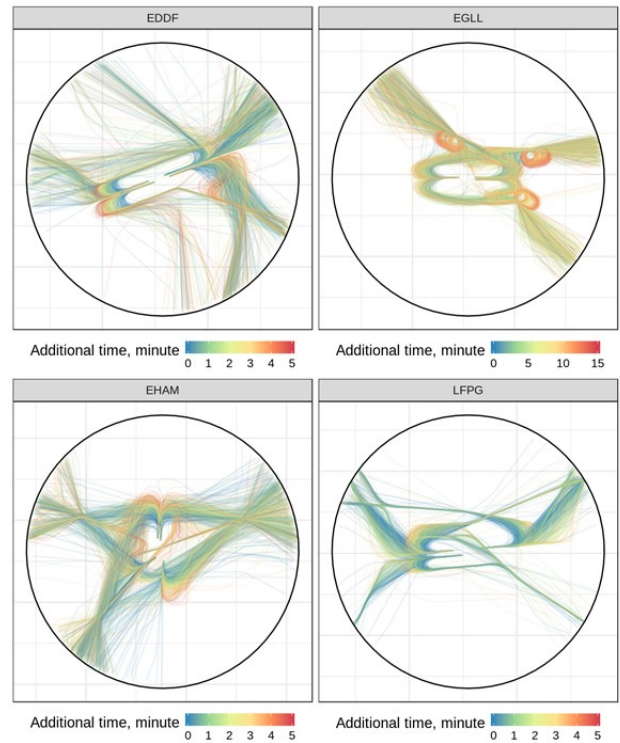


Figure 5. Trajectories with additional time

V. VERTICAL DEVIATION

The analysis relies on vertical deviations to reference profiles based on best performers of each airport. A reference profile is defined for each arrival flow. An arrival flow encompasses the arrival flights to the same runway and from the same entry arc (determined by statistical clustering) and altitude at the 50NM. For each flow, the reference profile at a time to final t is the 90th percentile of the altitude of the flown profiles at time to final t or at a closer time to final $t' < t$.

Thus, a reference profile is not a profile actually flown, but a succession of multiple portions of flown profiles, generally in non-congested conditions (i.e. with a short transit time) and extended to the largest transit time (see following figures). Note: the reference profiles thus defined represent approximately 2% of flown profiles (± 200 ft).

The vertical deviation is then defined as the difference between the altitude of the corresponding reference profile and the current altitude (see figures below). It can be noticed that, for a short period, some profiles may be higher than the reference, thus leading to a negative vertical deviation.

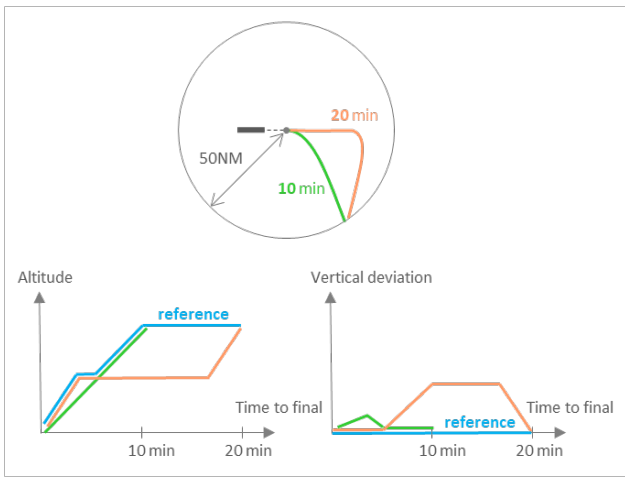


Figure 6. Reference profile and vertical deviations for two simple profiles

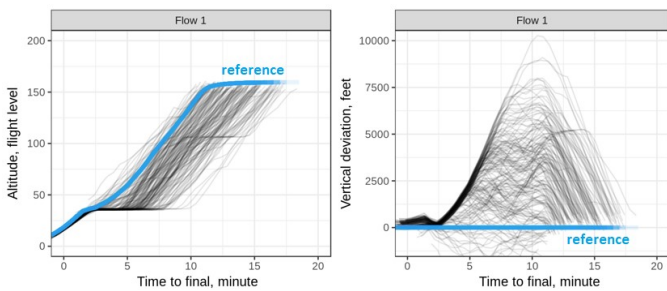


Figure 7. Reference profile and vertical deviation for an arrival flow

The following figures show the vertical profiles and vertical deviations (2500 selected randomly) as a function of time to final, with median, 5% and 95% containment (calculated on the full set of trajectories and displayed until median transit time).

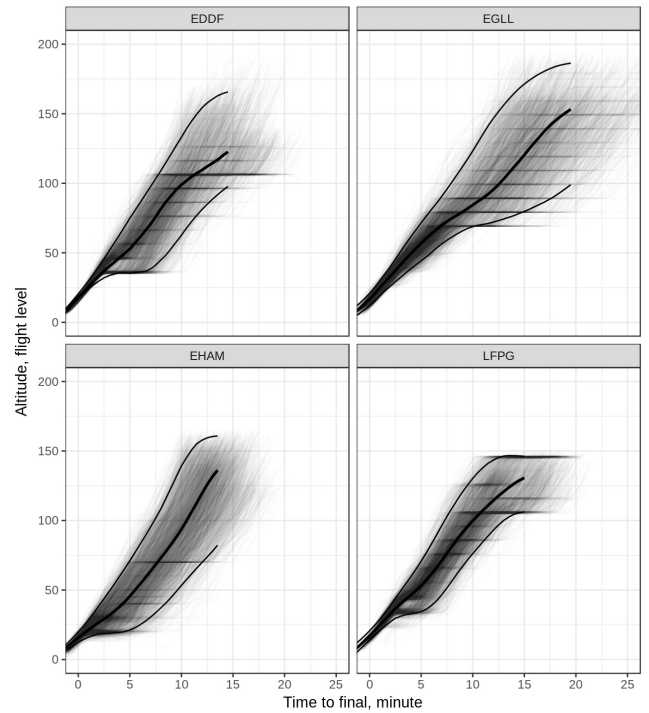


Figure 8. Vertical profiles (median and 90% containment)

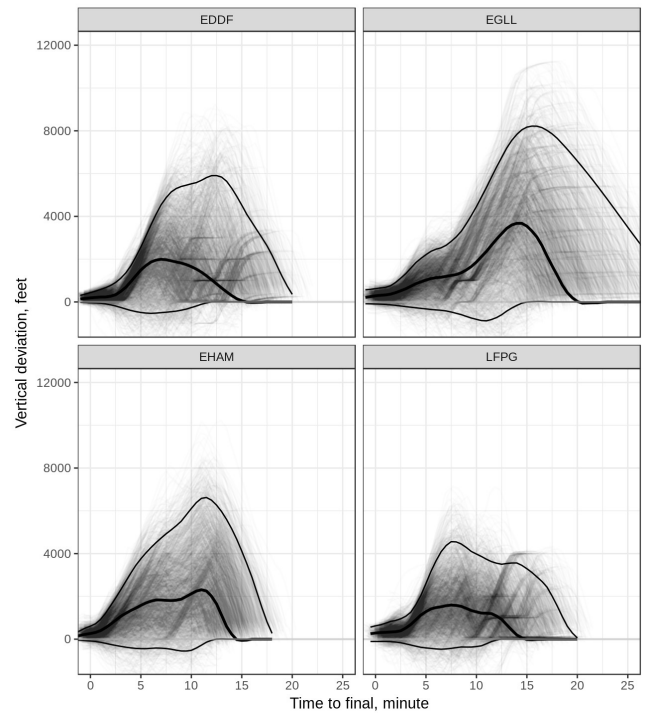


Figure 9. Vertical deviations (median and 90% containment)

We can notice that the 95% (highest) altitude curves are quite similar among the airports for the range 0 to 10 minutes to final with an altitude around FL130-FL140 at 10 minutes, and around FL70-FL80 at 5 minutes. Beyond 10 minutes, the 95% altitude curves continue to increase for three airports, but remains constant at FL150 for one (LFPG).

The main difference is on the 5% (lowest) altitude curves having a significantly different shape with a flat part starting at 2000ft for one (EHAM), at 4000ft for two (EDDF and LFPG) and at FL70 for the last one (EGLL). This flat part reflects the (lowest) altitude of the path extension.

Regarding vertical deviation, the difference of shape among the 95% (highest) curves is directly related to the difference of shape among the 5% (lowest) altitude curves. The 95% maximum values range between 5000ft and 8000ft. It can be noticed that the 5% (lowest) deviation curves go slightly negative reflecting that some profiles are better than the reference ones. The duration of the deviations represents the transit time.

These views of vertical deviation suggest to consider the surface of the curves to capture the whole deviation during transit time (note: by definition the deviation curves are ‘closed’, i.e. start and end at zero, thus defining a surface). This will constitute our key indicator, still denoted *vertical deviation* and expressed in feet × 10 minutes, that combines in a single value both altitude and duration.

The following table and figures show the medians and distributions of the vertical deviations (the table also shows the median value for the common range of additional time [0-5min]). Overall, the average value for the four airports is 2320ft×10min which may appear significant. Three airports have values lower than the average (EDDF, EHAM, LFPG) and the other one much higher (EGLL). The differences tend to reduce when considering the common range of additional time, with in particular EGLL decreasing below EHAM.

TABLE 2. MEDIAN VERTICAL DEVIATIONS (FEET × 10 MINUTES)

Airport	Vertical deviation	
	Full range	Common range
EDDF	1810	1760
EGLL	3700	1860
EHAM	2200	2150
LFPG	1580	1580

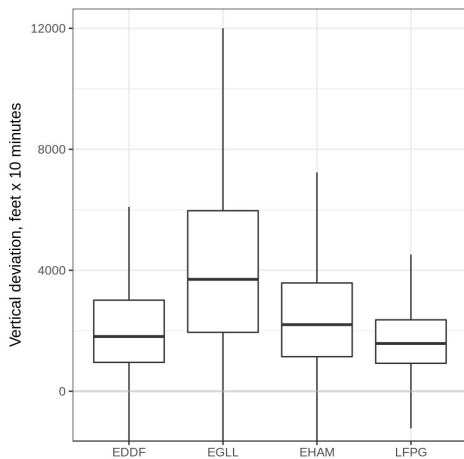


Figure 10. Distribution of vertical deviations

To go further in the analysis, following what was done by the PRU and other studies, we consider a split at FL70: above for fuel considerations, below for noise considerations. Note: above (resp. below) means the profile at time t is above (resp. below) FL70; for a profile at time t below FL70, the reference profile at t may be above FL70.

The following table and figures show the medians and distributions. Overall, the deviations are larger above FL70 than below, with average values of 1580 vs 650ft×10min and a ratio above/below of 2.4. The distributions reveal very different situations (already visible on the vertical profiles). EGLL has by far the largest deviation above FL70 but the second smallest below FL70 leading to a ratio above/below of 5.8. These reflect the combination of holding with high additional time (above FL70) and a systematic procedure when leaving holding (continuous descent below FL70). EHAM shows a moderate deviation above FL70 but by far the largest below FL70 leading to a ratio of 1.2 (the dispersion below FL70 is also slightly larger than above). EDDF and LFPG show similar ratios (1.8 and 2.0).

TABLE 3. MEDIAN VERTICAL DEVIATIONS (FEET × 10 MINUTES)

Airport	Vertical deviation		Ratio above/below
	below FL70	above FL70	
EDDF	610	1120	1.8
EGLL	530	3060	5.8
EHAM	950	1120	1.2
LFPG	510	1000	2.0

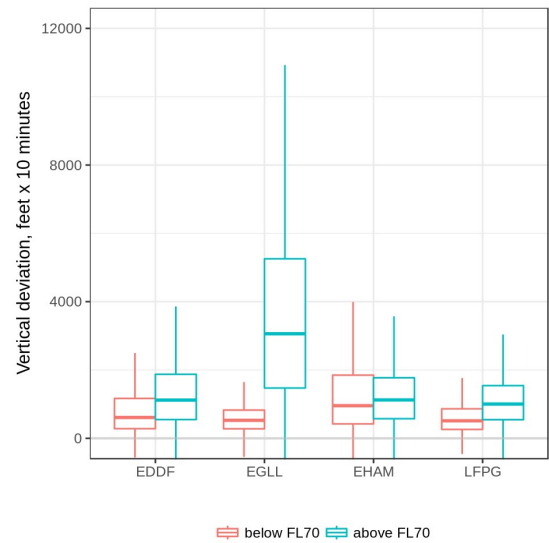


Figure 11. Distribution of vertical deviations, above and below FL70

VI. VERTICAL DEVIATION AND ADDITIONAL TIME

This section investigates the relation between vertical deviation and additional time. The following figures show the vertical profiles and vertical deviations (2500 selected randomly) with additional time (display up to 95% thus leading to 5.5 minutes for LFPG, 6 minutes for EDDF and EHAM, 15 minutes for EGLL; note a different scale for EGLL).

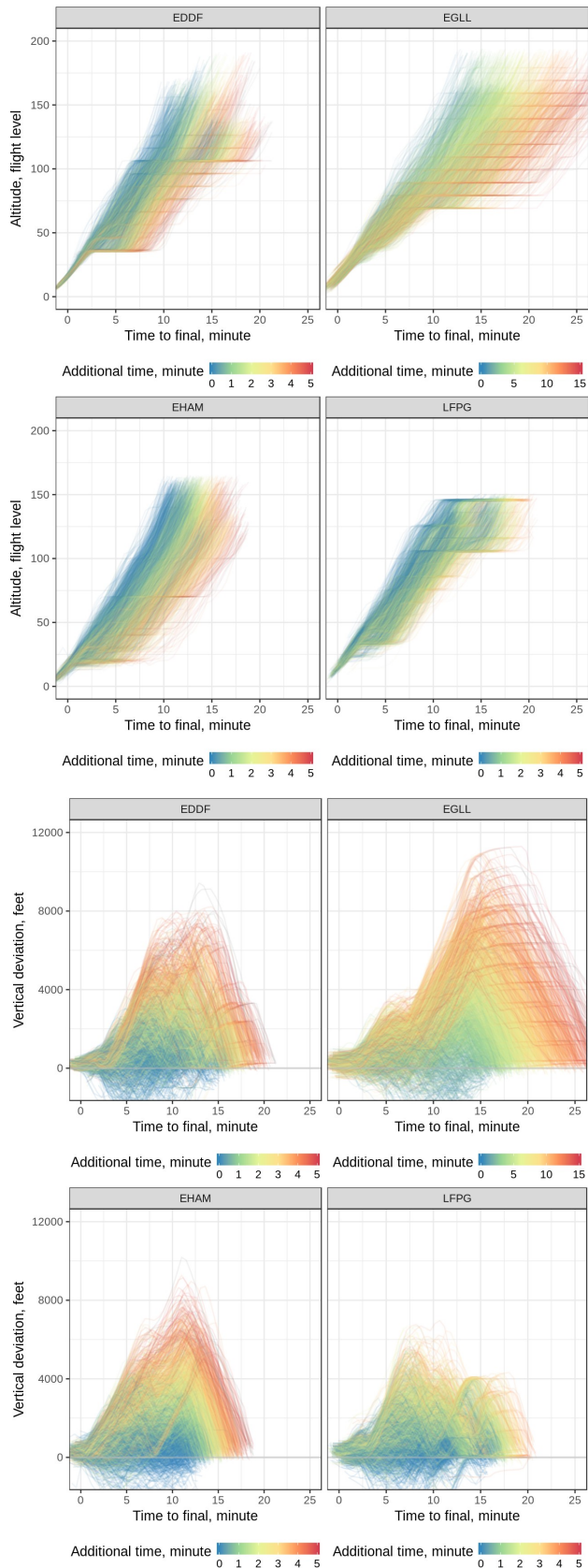


Figure 12. Vertical profiles and vertical deviations with additional time

The following figures show the median vertical deviations per additional time. All these figures suggest that generally profiles degrade and deviations increase when additional time increases. It may be noticed that the profiles with negative deviations are mostly at no additional time.

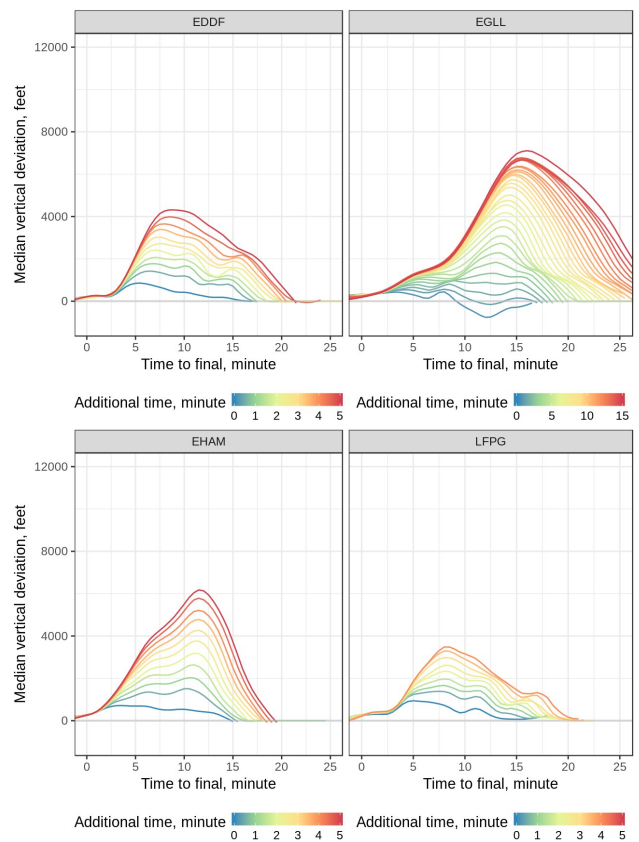


Figure 13. Vertical deviations with additional time (median)

To go further in the analysis, the following figures show the vertical deviation as a function of the additional time, with median, 5% and 95% containment (displayed until 95% additional time; note a different scale of additional time for EGLL).

These figures reveal a double inefficiency. Firstly, an increase of vertical deviation with the additional time: the median vertical deviation increases by $800\text{ft} \times 10\text{min}$ per 1 minute additional time ($4000\text{ft} \times 10\text{min}$ increase from 0 to 5 minutes additional time). Secondly, a variability of descent profiles for a same level of congestion: the vertical deviation span (90% containment) is $2000\text{ft} \times 10\text{min}$ or more for a same additional time ($2000\text{ft} \times 10\text{min}$ for 0 minute additional time, $4000\text{ft} \times 10\text{min}$ for 5 minutes). For the common range of additional time, the four airports show similar trends in terms of increase and variability. We may notice the medians starting close to zero for zero additional time, and negative deviations for low additional times.

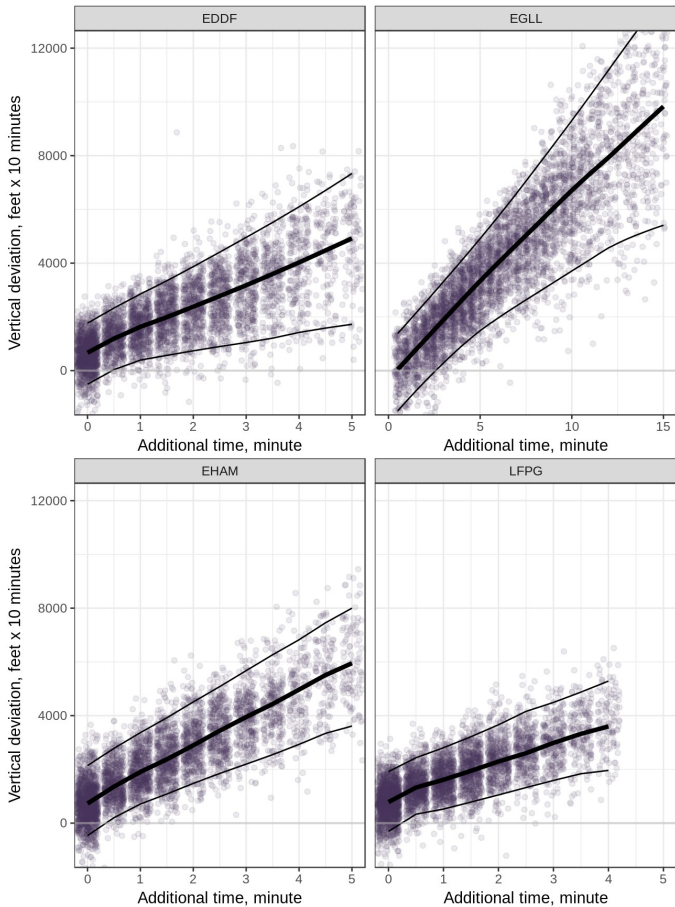


Figure 14. Vertical deviations and additional time (median and 90% containment; different scale for EGLL)

The following figures show the split at FL70. In addition to what was already observed on the distributions, in particular regarding ratio above/below for EGLL and EHAM, we can notice that both deviations (above and below FL70) increase with the additional time. There is however one remarkable exception: EGLL below FL70, which remains constant and with a limited variability. This confirms a systematic procedure below FL70 (continuous descents) even under high traffic conditions. In contrast, EHAM shows similar median curves (above and below FL70) with a containment larger below FL70 than above.

The cause of the first inefficiency (degradation) is directly related to the sequencing and possible solutions exist to reduce the additional time in terminal area (metering and speed management upstream) or to maintain aircraft altitude during path extension (dedicated procedure). The cause of the second one (variability) remains however unclear and may be due to different factors: change of sequence order, traffic separation, wind, controller workload, flight management, interpersonal differences (controllers or flight crews). This will be investigated in future work with the analysis of large vertical deviations and possible ways to reinforce adherence to best descent profiles.

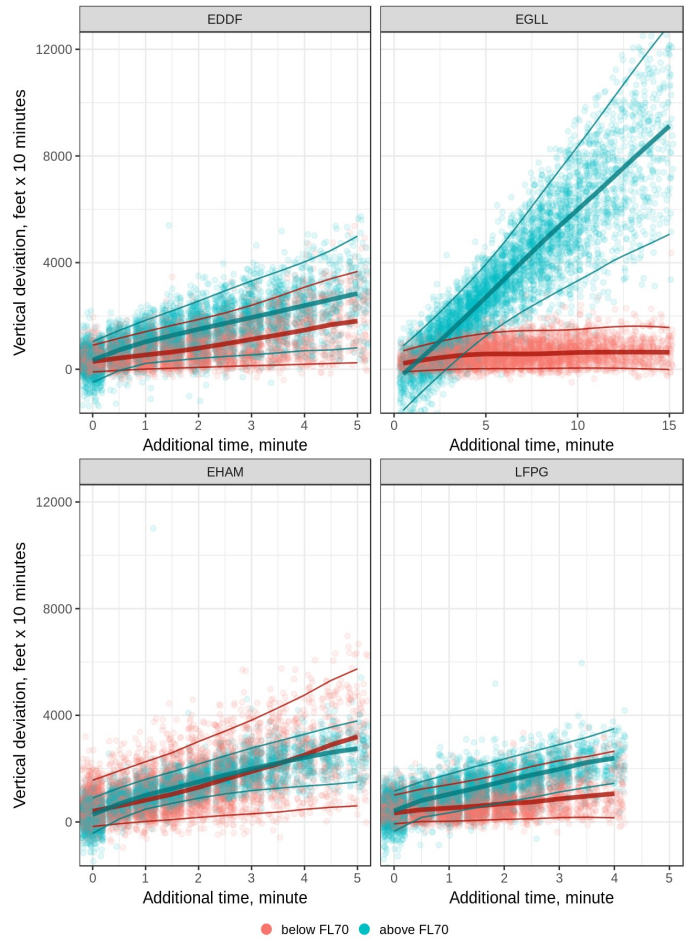


Figure 15. Vertical deviations and additional time, above and below FL70 (median and 90% containment; different scale for EGLL)

VII. RELATIVE VS ABSOLUTE

The analysis presented in the previous sections relies on reference profiles defined as best local performers. This leads to a relative assessment of vertical inefficiency. Alternatively, reference profiles could be defined as an ideal continuous descent profile common to all airports. This would lead to an absolute assessment of vertical inefficiency. Note that other profiles may also be considered, such as ideal or target profiles defined locally taking into account constraints of the environment.

To illustrate this, we focus here on the three main flows on the most used runway at EHAM. The following figures show the best performers and an ideal profile, with the corresponding vertical deviations. The ideal profile is a continuous descent from altitude at entry, with a moderate slope (2.5 degree) to allow for speed reduction, preceded by a level-off segment at altitude entry in 50NM area. In this case, there are three reference profiles for each flow, one per altitude at entry.

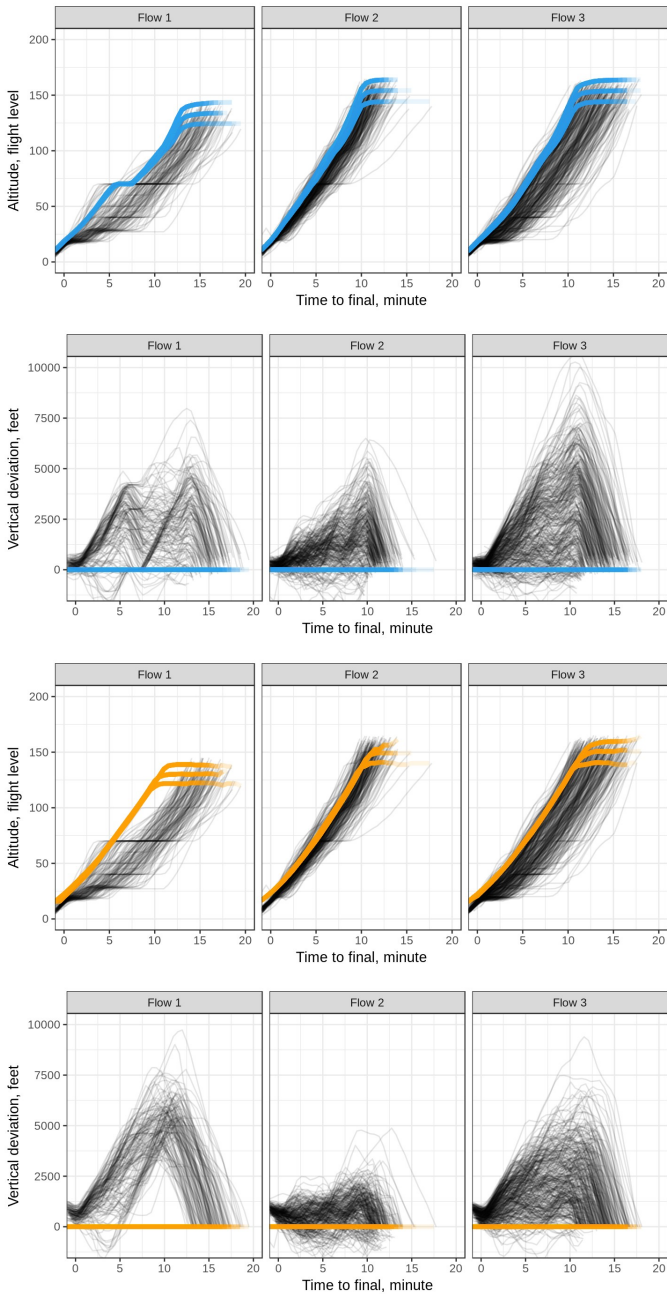


Figure 16. Reference profiles and vertical deviations for the three flows with best performers (blue) and ideal profile (orange)

For flow #1, the level-off segment at FL70, most probably due to airspace constraints (segregation between arrivals and departures), induces different references. The level-off is indeed integrated in the best performer but not in the ideal profiles thus leading to an empty/blank surface and a larger absolute deviation. In contrast, for flows #2 and #3, both reference profiles are similar thus leading to similar deviations.

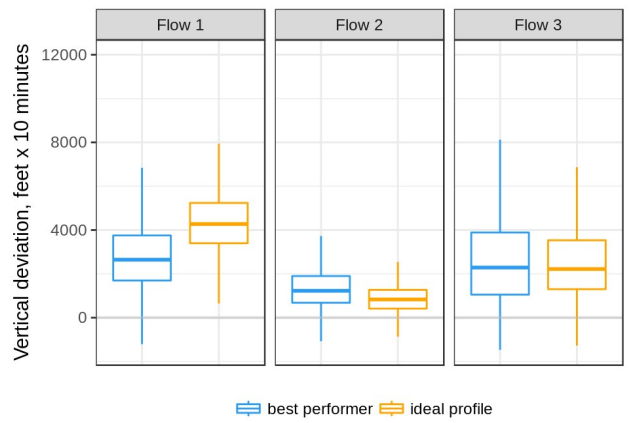


Figure 17. Distribution of vertical deviations for the three flows (best performer and ideal profile)

The following table and figure show relative and absolute deviations for the airport (median, average and distributions). We may notice that, similarly to flow #1, the absolute deviation for the airport (median and average) is larger than the relative deviation.

TABLE 4. MEDIAN AND AVERAGE DEVIATIONS (FEET \times 10 MINUTES) FOR THE AIRPORT (BEST PERFORMER AND IDEAL PROFILE)

Reference	Median	Average
Best performer	2200	2500
Ideal profile	2700	2980

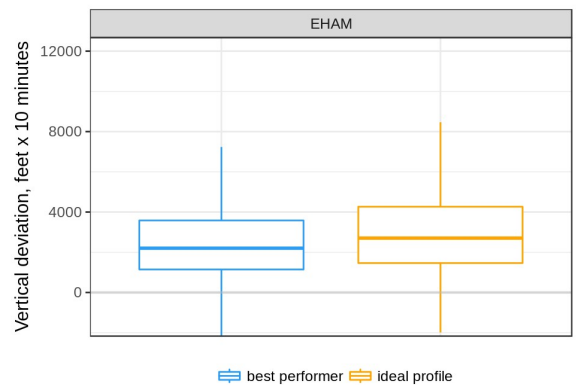


Figure 18. Distribution of vertical deviations for the airport (best performer and ideal profile)

This case study suggests that the method presented may support both relative and absolute assessments, depending on the choice of the reference profiles. The relative assessment provides an indication of what best the airport may achieve considering the constraints of the environment, while the absolute assessment provides a performance indication regardless of constraints. The method also enables the integration of the level of congestion through the additional time; the focus on an area of interest (e.g. terminal area in 50NM or extended area in 100NM) eliminating the effect of the entry conditions; and finally the combination of the two dimensions of altitude and duration into a single indicator.

VIII. CONCLUSION

This paper presented an assessment of the vertical efficiency in descent at four major European airports using best local practice for each flow as a reference. The assessment relies on the analysis of the vertical deviation to best descent profiles of each airport, runway and flow, in relation to the additional flight time in the terminal area as a proxy for the level of congestion. It consists of analyzing the effect of the additional time on vertical deviations, and the variability of vertical deviations for a same additional time. It focusses on the 50NM area around each airport, and relies on six months of data from 2018 during day-time operations over more than 200 000 flights in total.

The assessment reveals a triple relative inefficiency. Firstly, descent profiles significantly lower than best practices: the median vertical deviation for 10 minutes flight time exceeds 2300ft. Secondly, a degradation of descent profiles with the level of congestion: the median vertical deviation for 10 minutes flight time increases by 800ft per 1 minute additional time (4000ft increase from 0 to 5 minutes additional time). Thirdly, a variability of descent profiles for a same level of congestion: the vertical deviation span (90% containment) for 10 minutes flight time is 2000ft or more for a same additional time (2000ft for 0 minute additional time, 4000ft for 5 minutes). The four airports have different deviations on their common range of additional time (between 1600ft and 2100ft in 0-5min range), even more pronounced when considering deviations above and below FL70 with a ratio above/below ranging from 1.2 to 5.8.

Further work will involve the identification of the causes of large vertical deviations and possible ways to reinforce adherence to best descent profiles.

ACKNOWLEDGEMENTS

The authors would like to thank Thomas Pütz for his comments and suggestions.

REFERENCES

- [1] EUROCONTROL, ATM Airport Performance (ATMAP) Framework, Measuring Airport Airside and Nearby Airspace Performance, December 2009.
- [2] EUROCONTROL Performance Review Unit web site <http://ansperformance.eu>
- [3] EUROCONTROL, "Analysis of vertical flight efficiency during climb and descent", Technical report, January 2017.
- [4] EUROCONTROL, Performance Review Report, An Assessment of Air Traffic Management in Europe during the Calendar Year 2017, May 2018.
- [5] EUROCONTROL and FAA, Comparison of Air Traffic Management-Related Operational Performance: U.S./Europe 2017, March 2019.
- [6] D. Knorr, X. Chen, M. Rose, J. Gulding, P. Enaud and H. Hegendoerfer, "Estimating ATM Efficiency Pools in the Descent Phase of Flight", USA/Europe Air Traffic Management R&D Seminar, Berlin, Germany, 2011.
- [7] D. Howell and R. Dean, "Have Descents really become more Efficient?", USA/Europe Air Traffic Management R&D Seminar, Seattle, Washington, USA, 2017.
- [8] S. Shresta, D. Neskovic and S. Williams, "Analysis of Continuous Descent Benefits and Impacts During Daytime Operations", USA/Europe Air Traffic Management R&D Seminar, Napa, California, USA, 2009.
- [9] J. E. Robinson and M. Kamgarpour, "Benefits of Continuous Descent Operations in High-Density Terminal Airspace Under Scheduling Constraints", AIAA Aviation Technology, Integration, and Operations Conference, Ft. Worth, Texas, USA, 2010.
- [10] Y. Cao, T. Kotegawa and J. Post, "Evaluation of Continuous Descent Approach as a Standard Terminal Airspace Operation", USA/Europe Air Traffic Management R&D Seminar, Berlin, Germany, 2011.
- [11] T. Thompson, B. Miller, C. Murphy, S. Augustine, T. White and S. Souihi, "Environmental Impacts of Continuous-descent Operations in Paris and New York Regions", USA/Europe Air Traffic Management R&D Seminar, Chicago, Illinois, USA, 2013.