

MONDAIS:

EASA AI Roadmap 1.0

Guillaume Soudain

EASA Software Senior Expert / AI Project Manager

1st February 2020

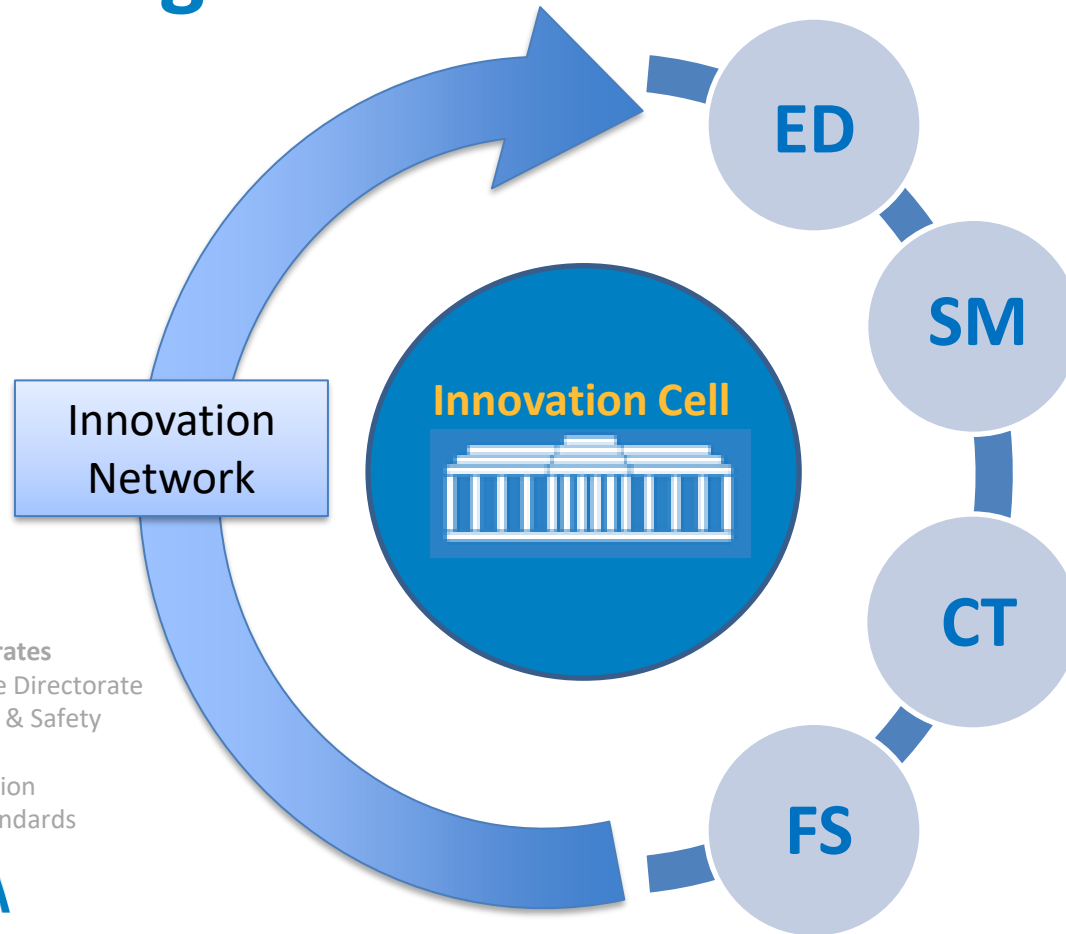


EASA organisation for innovation

The EASA Innovation Cell and internal Innovation Network



EASA organisation to deal with innovation



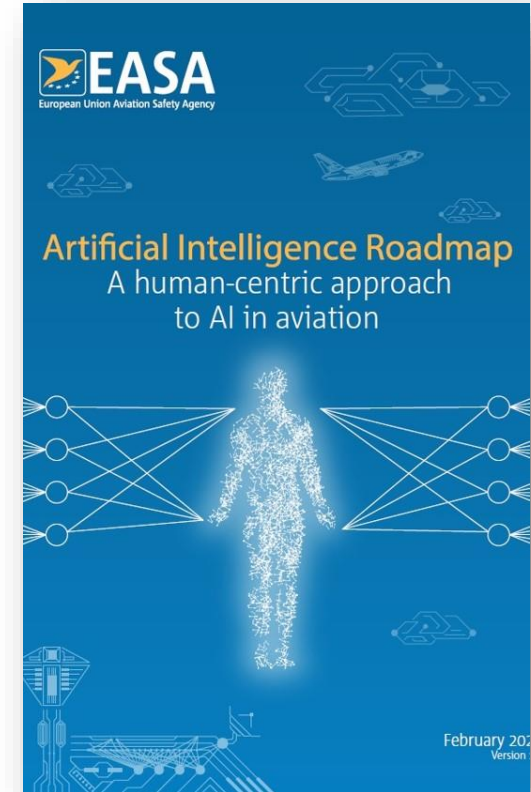
EASA Directorates

ED – Executive Directorate

SM – Strategy & Safety
Management

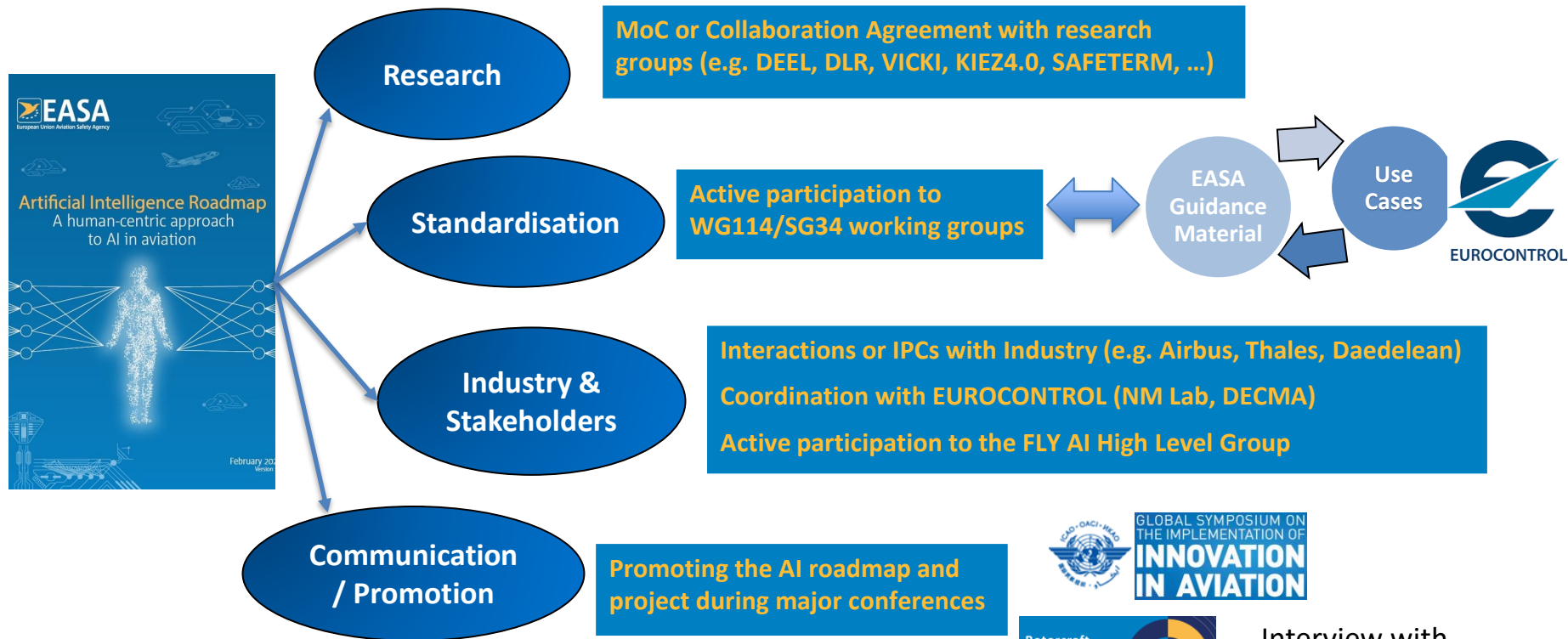
CT – Certification

FS – Flight Standards



EASA & The introduction of AI

Executing the AI Roadmap – Partnering with aviation actors

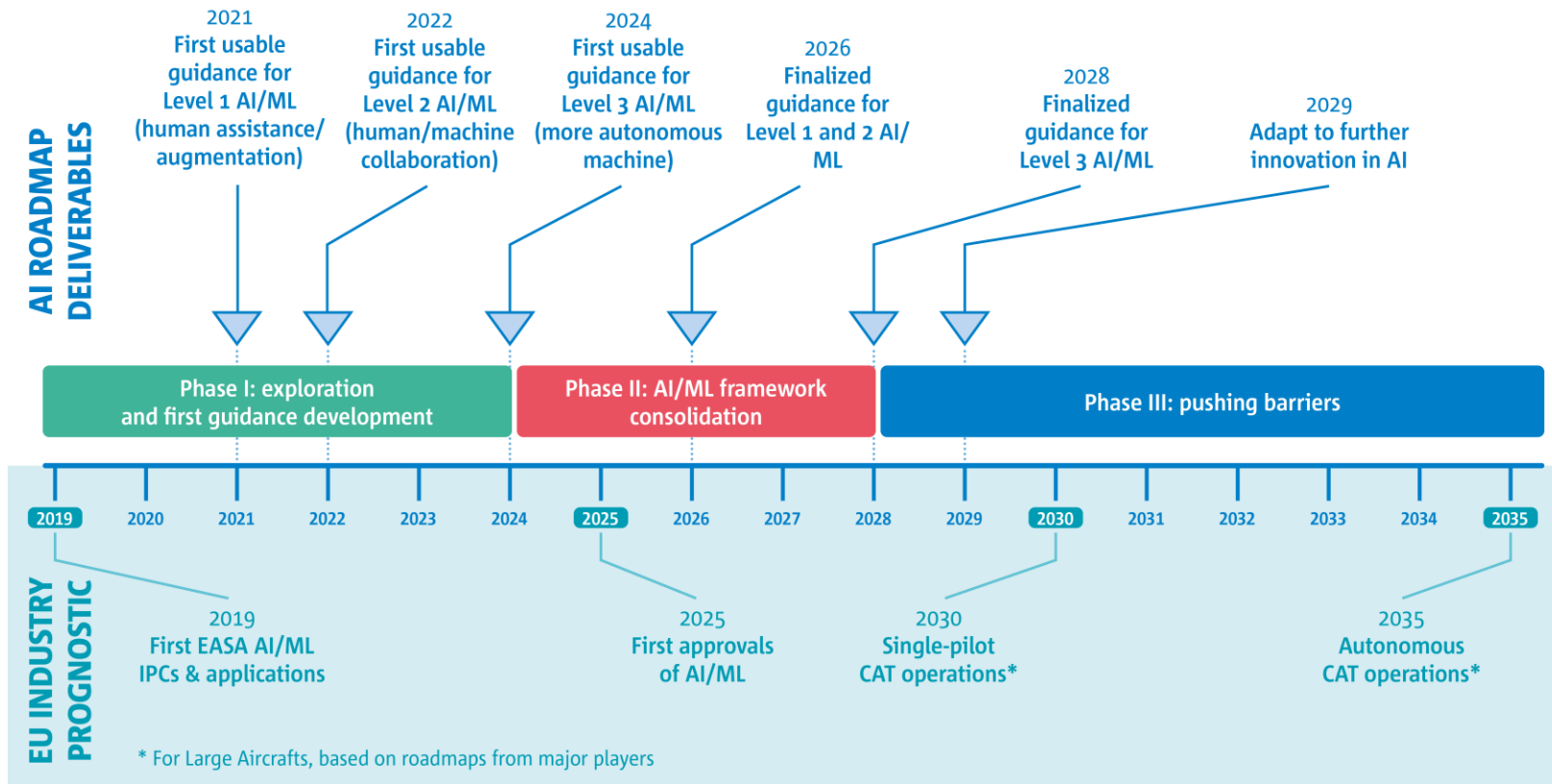


EASA AI Roadmap overview

A human-centric approach to
AI in aviation



EASA AI Roadmap timeframe and milestones

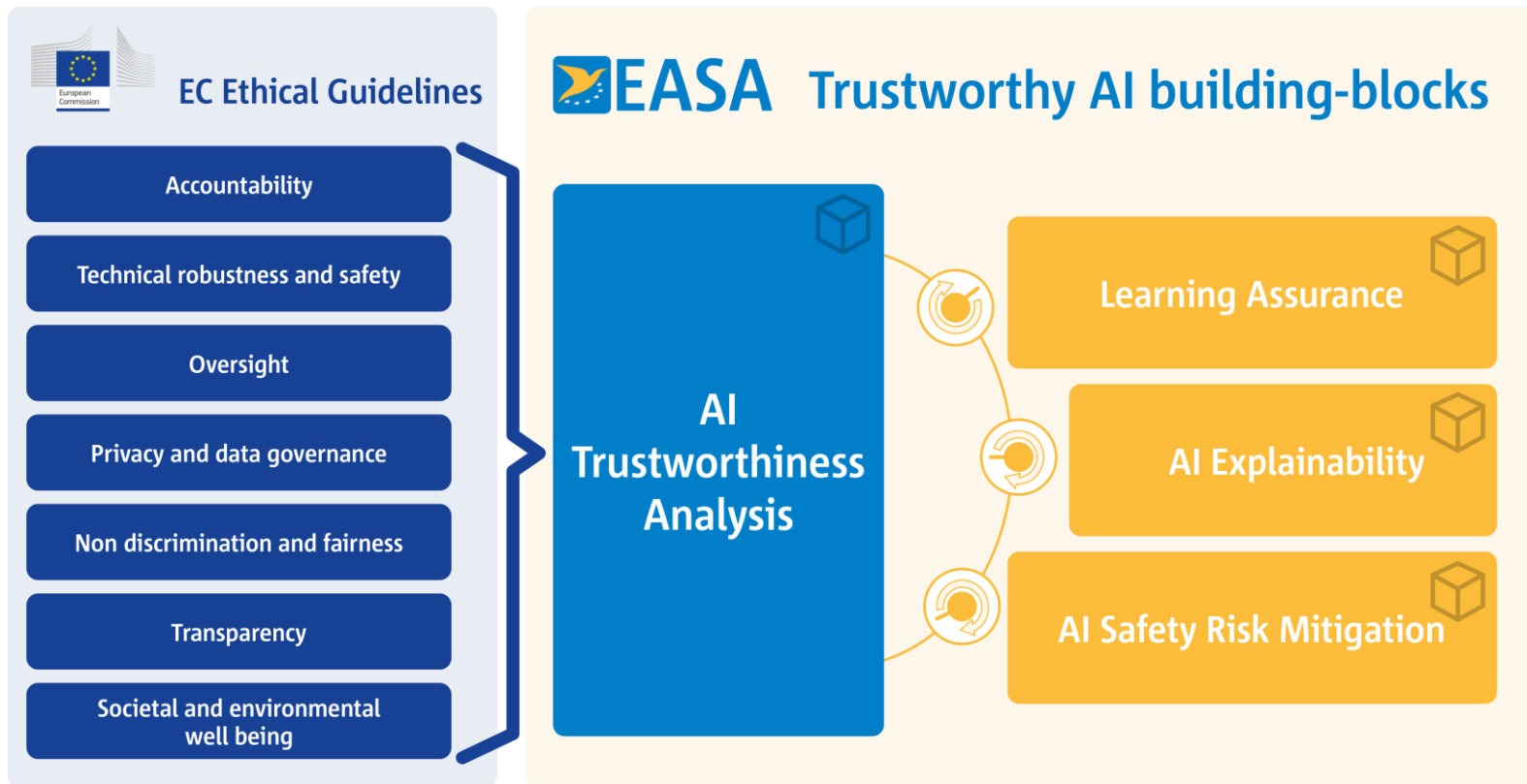


AI Trustworthiness

A driving concept



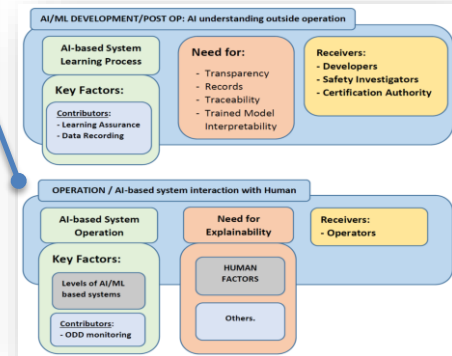
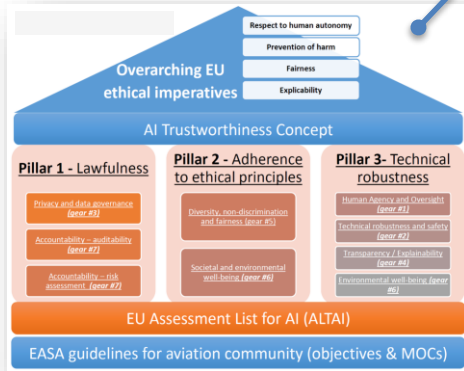
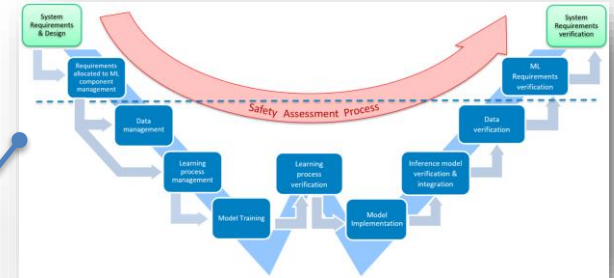
AI Trustworthiness building blocks



First Usable Guidelines for AI Level 1



EASA Trustworthy AI building-blocks



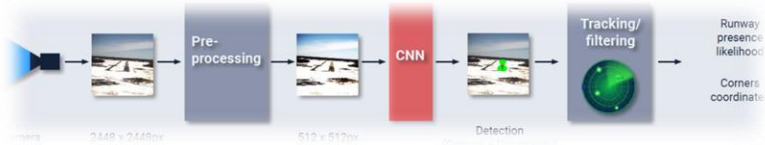
Exercising Guidelines with Use Cases

Partnership with Research & Industry



First Use Cases – AI Level 1 (Human assistance)

Exercising the Guidelines in all domains



Air Ops - Runway Detection (Daedalean)

CoDANN IPC report available: www.easa.europa.eu/ai



ATM - Trajectory prediction (Eurocontrol)



Environment - Fuel consumption estimation (EASA)



Training - Monitoring trainee performance (TBD)

Thank you for your attention!

TRUST

Any question?

Please contact us: guillaume.soudain@easa.europa.eu

easa.europa.eu/connect



Your safety is our mission.

An Agency of the European Union 